

FOR LEASE

UNITS

112-114

590 EBURY PLACE
DELTA, BC

Owned by

Beedie/

Managed by

|||
CANREAL



OPPORTUNITY

To lease 8,009 sf of warehouse and office space at 590 Ebury Place on Annacis Island. The building features dock and grade loading doors, ample parking, and provides excellent truck access and maneuvering.

Located just a 5-minute drive from the Alex Fraser Bridge and the Highway 91/South Fraser Perimeter Road Interchange, the property provides convenient access to all municipalities within Metro Vancouver.

CONTACT

JONATHAN JASSEBI*

Vice President

604 998 6141

jonathan.jassebi@jll.com

** Personal Real Estate Corporation*

CASEY BELL*

Executive Vice President

604 998 6014

casey.bell@jll.com

** Personal Real Estate Corporation*



JLL
2150-510 West Georgia Street
Vancouver, BC V6B 0M3
604 998 6001
www.jll.ca

590 EBURY PLACE
DELTA, BC



AVAILABLE FOR OCCUPANCY
Units 112-114: Immediately



ADDITIONAL RENT (2026 ESTIMATE)
\$6.74 PSF plus 5% management fee



BASIC RENT
\$18.00 PSF



ZONING
I2: Medium impact industrial

BUILDING FEATURES

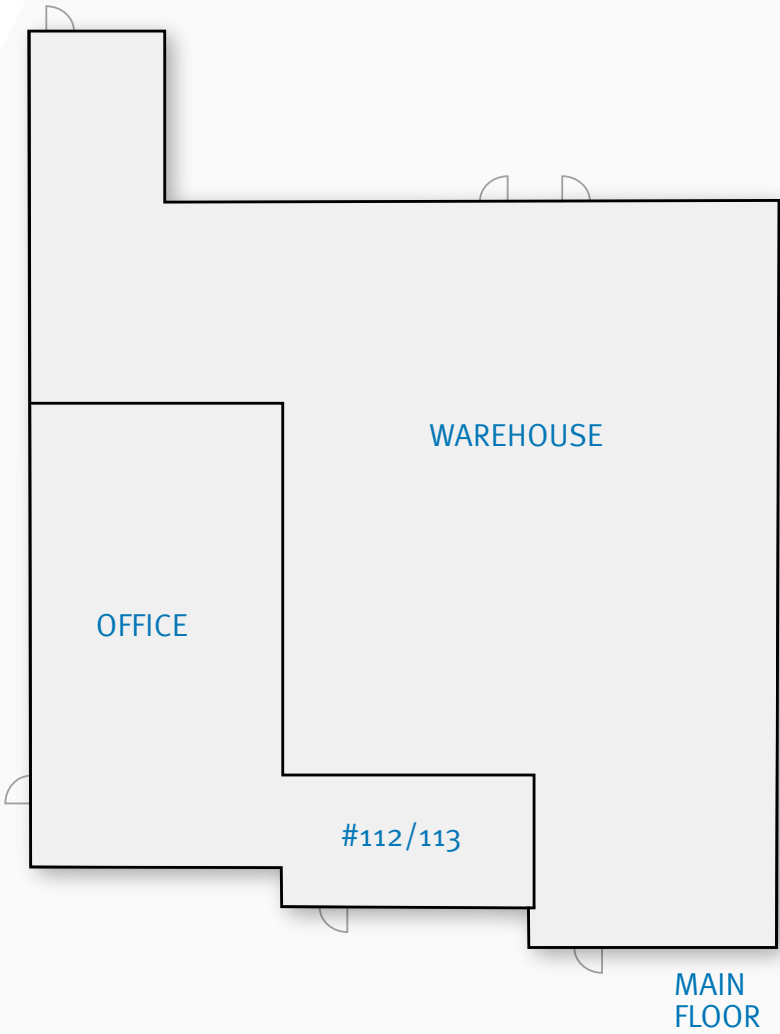
- 21' clear ceiling height in warehouse
- Grade level loading
- 100 amps | 3 phase | 120/208 volts per unit
- Excellent truck access & maneuvering room
- Concrete tilt-up construction
- Fully sprinklered
- Ample parking
- Corporate appeal
- Professionally managed

UNITS 112-114

MAIN FLOOR WAREHOUSE/OFFICE
7,980 SF

COMMON AREA
29 SF

TOTAL SPACE
8,009 SF



CONTACT

/

JONATHAN JASSEBI*

Vice President

604 998 6141 / jonathan.jassebi@jll.com

CASEY BELL*

Executive Vice President

604 998 6014 / casey.bell@jll.com

* Personal Real Estate Corporation

© 2026 Jones Lang LaSalle Real Estate Services, Inc. All rights reserved.
All information contained herein is from sources deemed reliable; however,
no representation or warranty is made to the accuracy thereof.



SEE A BRIGHTER WAY

2150-510 West Georgia Street

Vancouver, BC V6B 0M3

604 998 6001

www.jll.ca